



# Civilization

Civilization is a basalt-inspired porcelain tile collection from Crossville. The smooth, fine-grained stone naturally varies in color from light to dark, and Civilization follows suit with six natural incarnations of basalt featuring unique crystalline visuals and subtle movement found in these unique rock formations. Civilization features a 24x48 tile in both unpolished and semi-polished finishes, and a 24x24 and 12x24; along with a unique polygon mosaic, a 2x2 mosaic, and a standard bullnose and cove base. Civilization, a durable, high-tech porcelain tile entirely made in the USA, is one of Crossville's first Carbon Neutral tile collections.

#### APPLICATIONS:

Recommended for interior floors, walls, and exterior walls in both residential and commercial applications

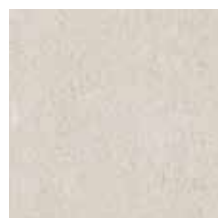
#### FINISHES:

Unpolished & Polished

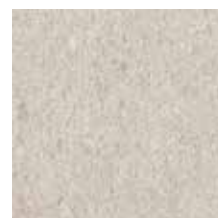
SIZES: 12"x24", 24"x48" & 24"x24"

Mosaic: 2"x2" Mosaic & Polygon Mosaic

Coordinating Trim Available



Census



Populace



Communique



Currency



Power



Legality



Cool Blend



Light Blend



Warm Blend

