



AMERICAN OLEAN®

Stone Theory™

Stone Theory™ blends nature with a contemporary flair. Inspired by the fusion of marble and quartzite, the three neutral colors are offered in popular large format sizes for both floor and wall applications, including a modernized 6x18 wall tile. A stunning tiffany glass and antiqued mirror mosaic, inspired by the Art Deco period, accentuates its intriguing stone visuals and contrasting veins. Add a striking yet calming ambiance to any space with Stone Theory.

APPLICATIONS:

Recommended for interior floors, walls, countertops, & shower floors

FINISHES:

Matte & Glossy (Decos Only)

SIZES:

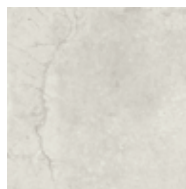
12"x24" & 18"x18", 6"x18" Wall Tile

DECORS: 2"x2" Mosaic, 14"x11-1/2" Arrow Glass & Antiqued Mirror Mosaic, 14"x12" Chevron Glass & Antiqued Mirror Mosaic, 14"x12-1/4" Stack Glass & Antiqued Mirror Mosaic

Coordinating Trim Available



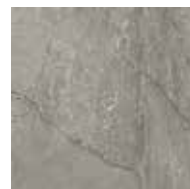
Notion



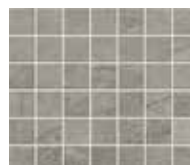
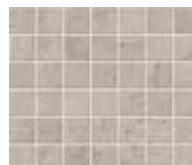
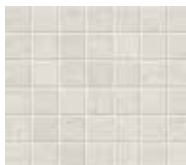
Metamorphic



Formation



2x2 Mosaic



Arrow Glass & Antiqued Mirror



Chevron Glass & Antiqued Mirror



Stack Glass & Antiqued Mirror



Geo Arrow



Geo Chevron



Geo Stack



Gem Arrow



Gem Chevron



Gem Stack

